



**REUSABLE
PACKAGING
SYSTEMS**

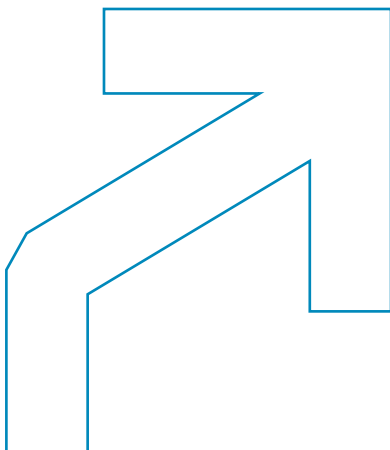


SMARTLOCK *Stay Together*

SMART LOCK Represents connection of pallet, lid and sleeve.

One part unit with lowest space.
No Risk of break for fixed component during set up and fold a container.

Extremely fast folding - build up.



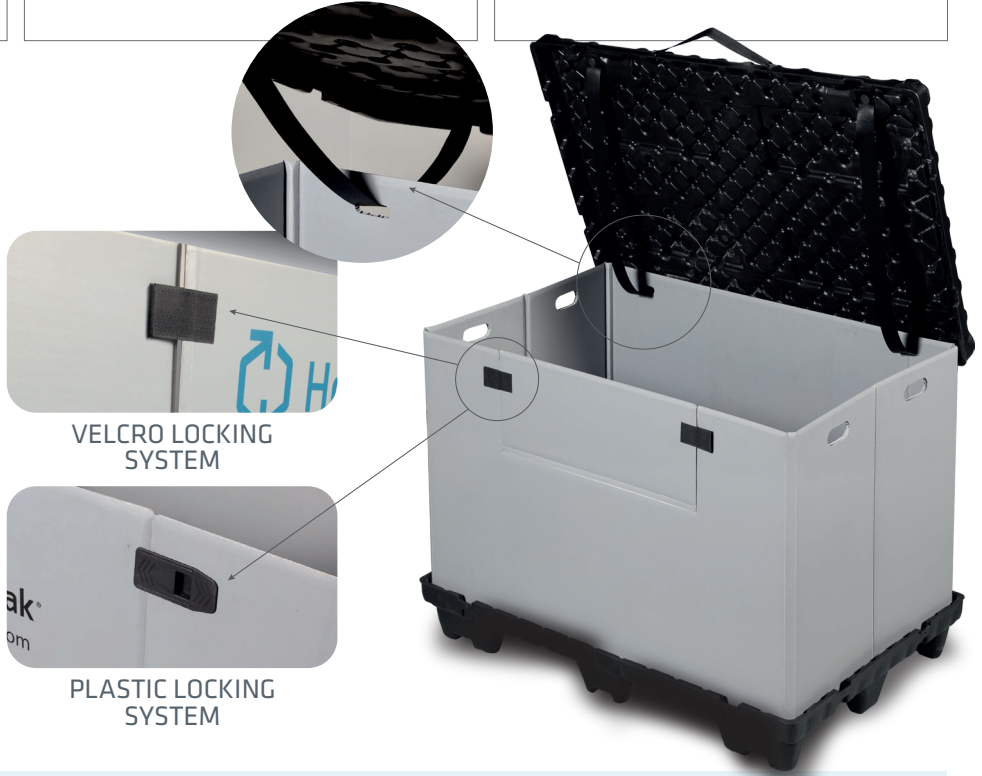
www.hexapak.com

Push and Pull in SECONDS

The Smartlock does not need any additional part for quick folding.

Its durability has also been tested and the results show that innovative SmartLock does not age or deteriorate.

The advantages of the Smartlock is available for all Hexapak Customers, which means it can be integrated into any given pallet enclosure.

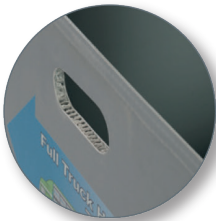


DIMENSIONS:

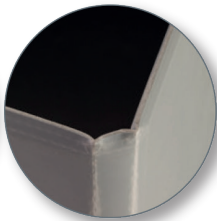
External Dimensions (mm)	Height (mm)	Internal Dimensions (mm)	Internal Height (mm)
800x1200	990	730x1130	778
1000x1200	990	1120x920	766
1225x1225	990	1150x1150	794
1200x1600	990	1540x1140	765
1200x1800	990	1140x1740	763

ACCESSORIES:

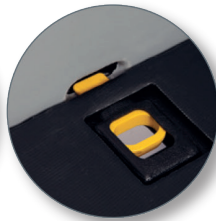
Handle



Close Edges



Locking System



Runners



Loading Door



Label Holder

